



Tri-Creek School Corporation SCHOOL BOARD MEETING

Engaged ~ Equipped ~ Empowered

May 11, 2023

CONTENT

- 1 Introduction
- 2 Image of Pride
 - Media Center
 - Central Office Relocation
- 3 Campus Plan
- 4 Schedule

SCHOOL BOARD
UPDATE

May 11, 2023

CREATED FOR

*Tri-Creek
School
Corporation*

INTRODUCTION



GIBRALTAR
DESIGN



HISTORICAL TIMELINE

Considerations of Analysis

- ❖ Allow Strategic Plan to guide Preparations for the Future and Growth
- ❖ Consider Operational Impact for School Capacity
- ❖ Consider Capital Expense for Increasing School Capacity
- ❖ Align Financial Parameters with Primary Objectives
- ❖ Maintain Future Forward Thinking; not IF but WHEN things will change again

SCHOOL BOARD
UPDATE

May 11, 2023

CREATED FOR

*Tri-Creek
School
Corporation*



GIBRALTAR
DESIGN



STRATEGIC PLAN

Preliminary Scope

1. Lowell High School Campus and Athletic Complex Needs

- ♦ *Update and Improve Aging and/or Outdated Components*
- ♦ *Increase student opportunities and community experience*

2. Lowell High School New Image of Pride

- ♦ *Security, Safety and Wayfinding for visitors and community*
- ♦ *New exterior identity with functional changes such as drives and entries*
- ♦ *Central Office Relocation to HS for Grade 5-8 Capacity*
- ♦ *Needed Facility Updates; maximum use of space; Reimagined Media Center, other*

3. Lowell Middle School 5-8 Conversion & Exterior Update

- ♦ *Opportunity for Dynamic 5-6 and 7-8 Learning Environments*
- ♦ *Align and provide for student population increases*

4. New Pool [existing pool out of date]

- ♦ *Swimming Curriculum Integration and Community Use*

5. Elementary Schools (District-Wide Upgrades)

- ♦ *Preventative Maintenance, Aesthetic Updates, & Furniture Replacements*

SCHOOL BOARD
UPDATE

May 11, 2023

CREATED FOR

Tri-Creek
School
Corporation



GIBRALTAR
DESIGN



GIBRALTAR GUIDING PRINCIPLES

Primary Objectives

FUNCTION

Maximizing formal, collaborative, and spontaneous learning opportunities throughout the schools.

VALUE

Balance ease of maintenance, sustainability, durability, and quality with required Program educational needs to maximize the potential of the budgeted resources.

EFFICIENCY

Cost Savings for Tri-Creek School Corporation will be attained by achieving operational cost objectives, such as Energy Star for heating & cooling, and related operational cost savings through practical solutions.

AESTHETICS

A pleasing appearance will be an integral part of the design concept and not derived from spending big dollars on contrived design enhancements..

SCHOOL FOR THE FUTURE

The final result will be a flexible and AGILE facility that can be easily modified or rearranged to respond to best practices while anticipating new teaching techniques and accommodating any potential future growth.

SCHOOL BOARD
UPDATE

May 11, 2023

CREATED FOR

Tri-Creek
School
Corporation



GIBRALTAR
DESIGN



SCHOOL BOARD
UPDATE

May 11, 2023

CREATED FOR

*Tri-Creek
School
Corporation*



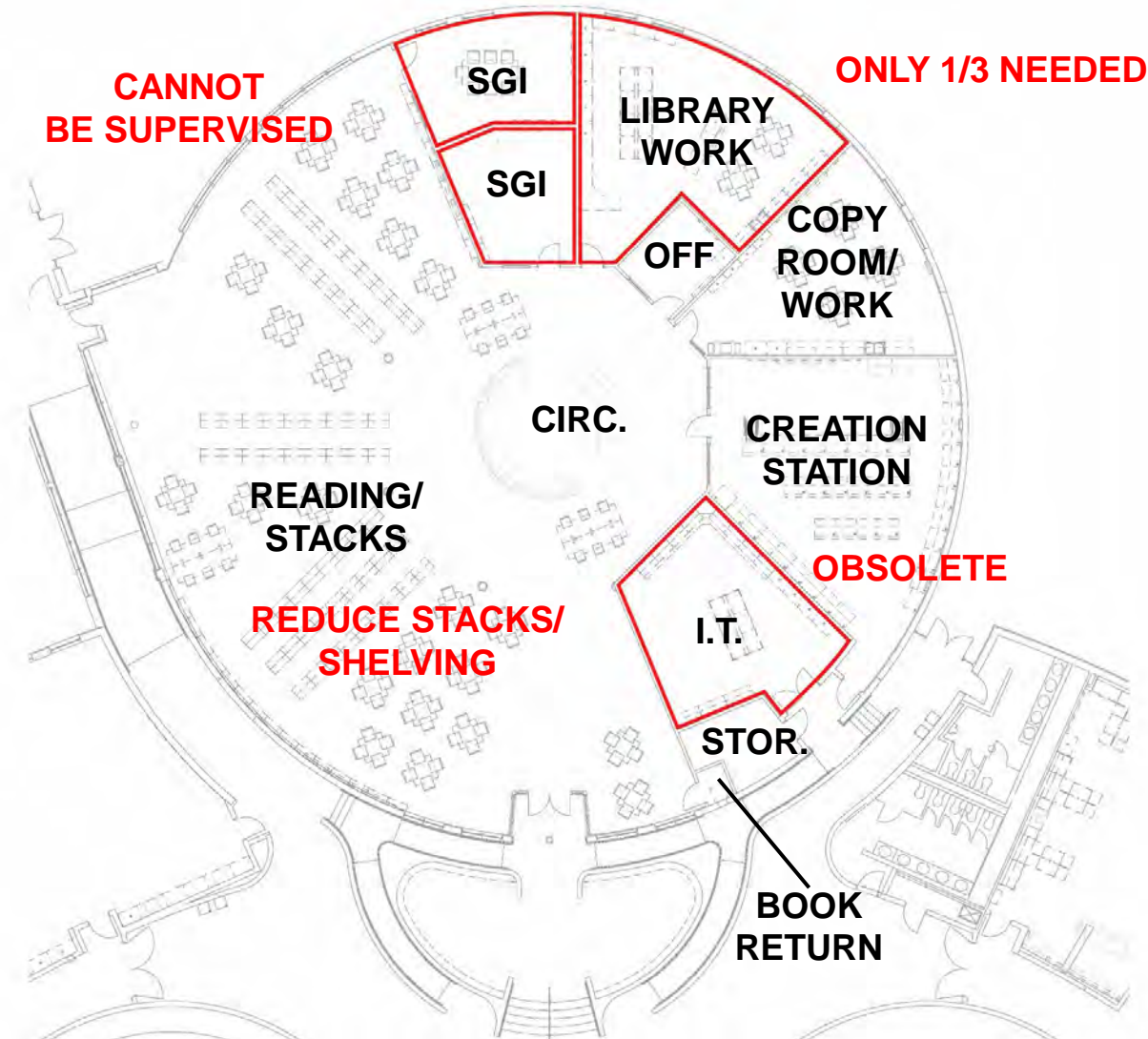
IMAGE OF PRIDE

MEDIA CENTER



MEDIA CENTER

Existing Functions – Outdated



Considerations

- ❖ **Media Centers continually evolve** with new ideas and new means of instructional development for Students and Teachers
- ❖ In recent years, the use of “Reference” Libraries has evolved to the Digital Age
- ❖ New Learning Environment opportunities exist in this area for students and instruction
- ❖ Align initial budget with greatest impact for students
- ❖ Better utilized square footage

SCHOOL BOARD
UPDATE

May 11, 2023

CREATED FOR

Tri-Creek
School
Corporation



GIBRALTAR
DESIGN



NORTH

MEDIA CENTER

PRIMARY

1. Student-Centered
2. Functions for Current Needs
3. Modern Refreshed Interior to Extent Practical

STUDENT-CENTERED

- ❖ Encourage engagement
- ❖ Make learning “visible”
- ❖ Optimize variety functions
- ❖ Social learning opportunity
- ❖ Flexible permissive space
- ❖ Convenient and changeable
- ❖ Exemplify scholarly spirit
- ❖ Vincennes University

SCHOOL BOARD
UPDATE

May 11, 2023

CREATED FOR

*Tri-Creek
School
Corporation*

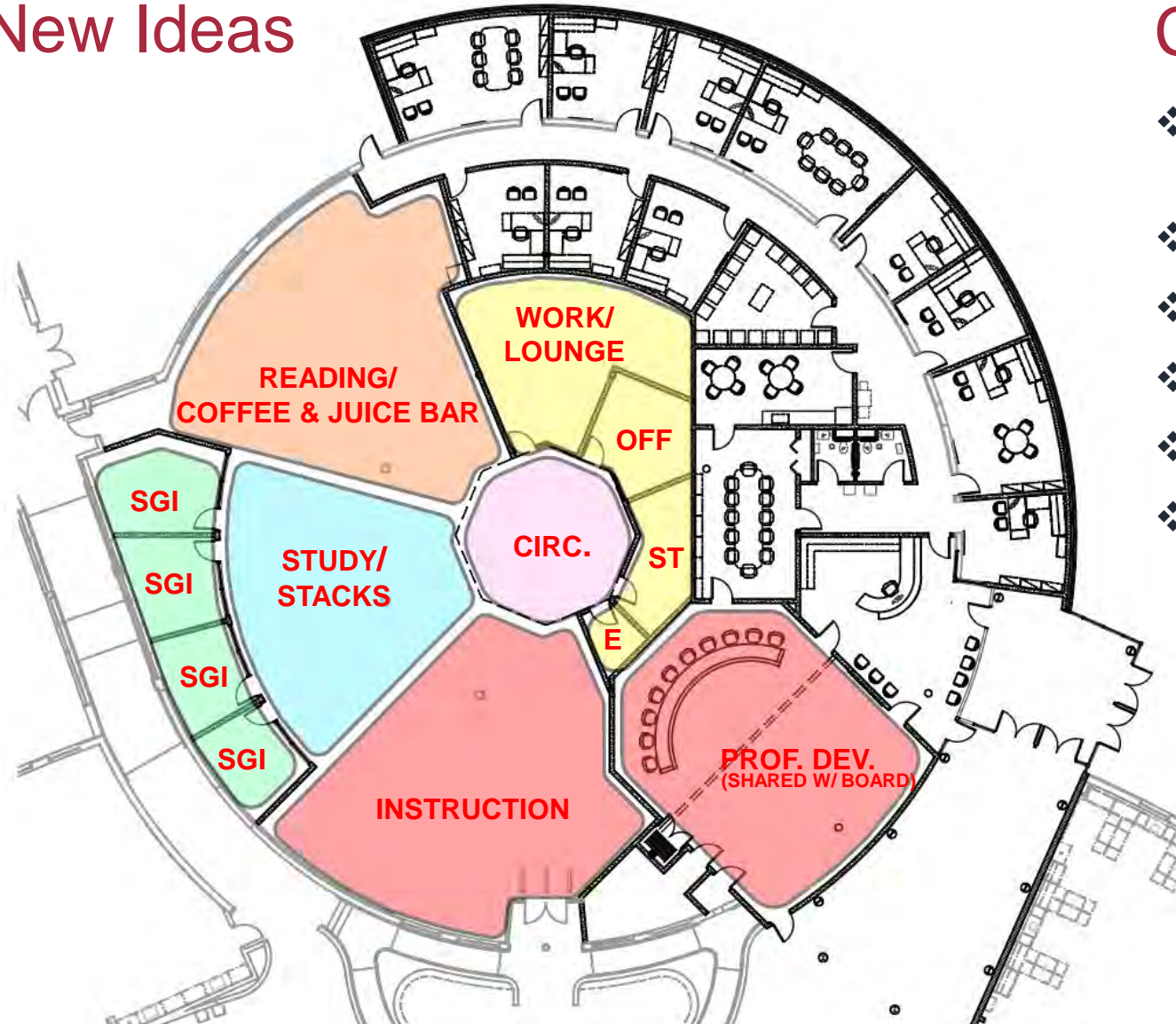


GIBRALTAR
DESIGN



MEDIA CENTER

New Ideas



Considerations

- ❖ Purposeful zones blended with flexible furniture to modify
- ❖ Movement Throughout
- ❖ Sightlines
- ❖ Simultaneous Activities
- ❖ Before/After School
- ❖ These Zones are Programmatical defined to be reconfigured for current and future instructional and student learning purposes.

± 7,940 SF

SCHOOL BOARD
UPDATE

May 11, 2023

CREATED FOR

Tri-Creek
School
Corporation



GIBRALTAR
DESIGN



MEDIA CENTER

Floor Plan

SCHOOL BOARD
UPDATE

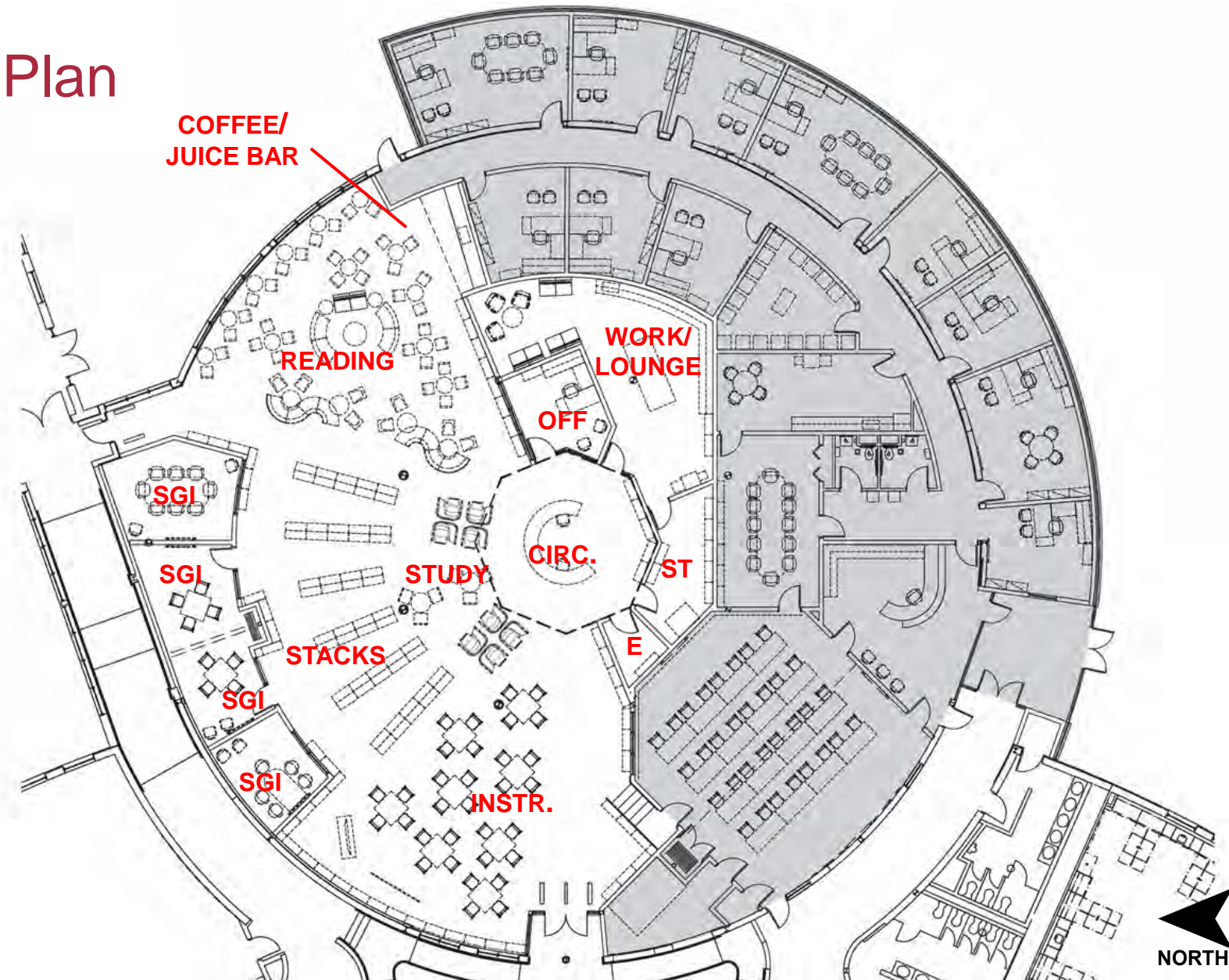
May 11, 2023

CREATED FOR

Tri-Creek
School
Corporation



GIBRALTAR
DESIGN



NORTH

MEDIA CENTER

Creation Station & Board Room

SCHOOL BOARD
UPDATE

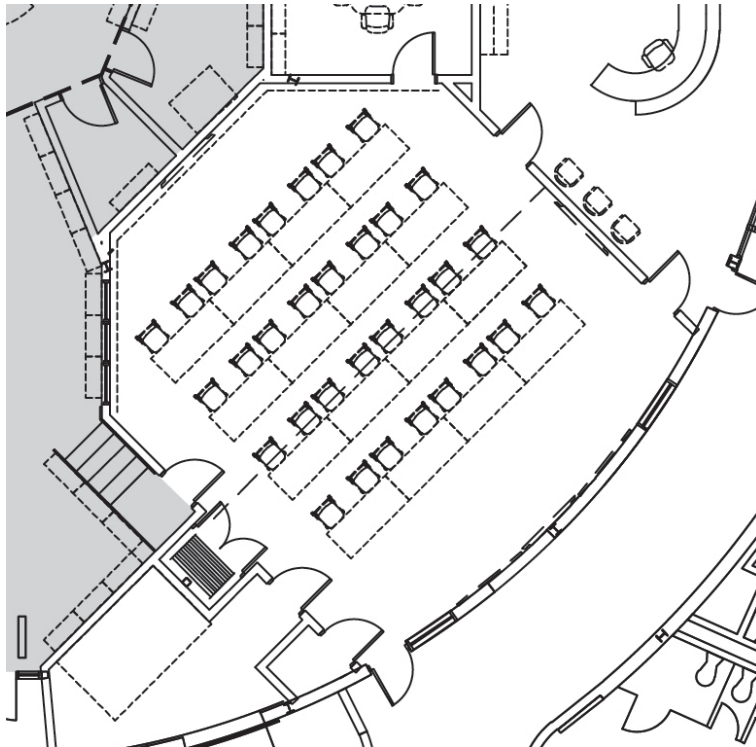
May 11, 2023

CREATED FOR

Tri-Creek
School
Corporation

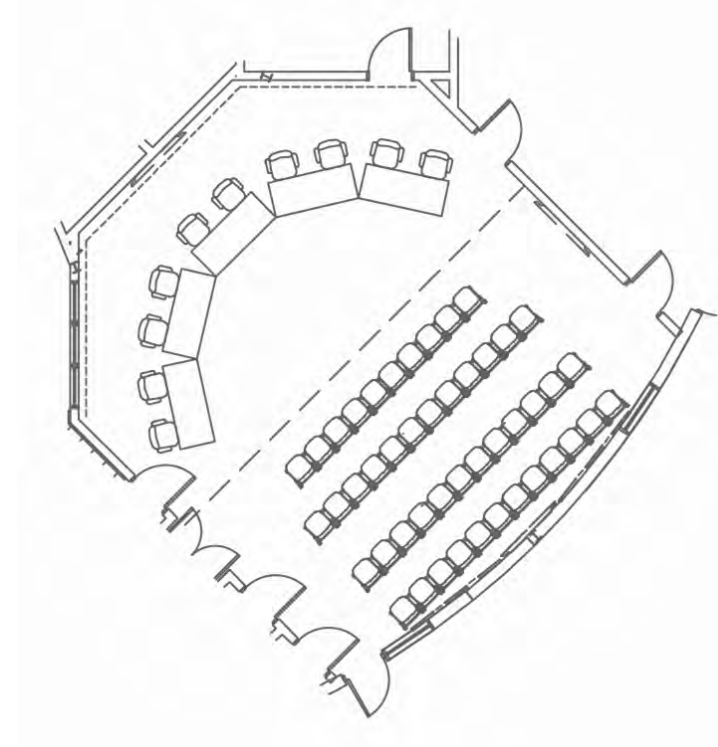


GIBALTAR
DESIGN



CREATION STATION

❖ Media Center Program



BOARD ROOM

❖ Central Office Program



SCHOOL BOARD
UPDATE

May 11, 2023

CREATED FOR

*Tri-Creek
School
Corporation*



IMAGE OF PRIDE

CENTRAL OFFICE RELOCATION



CENTRAL OFFICE RELOCATION

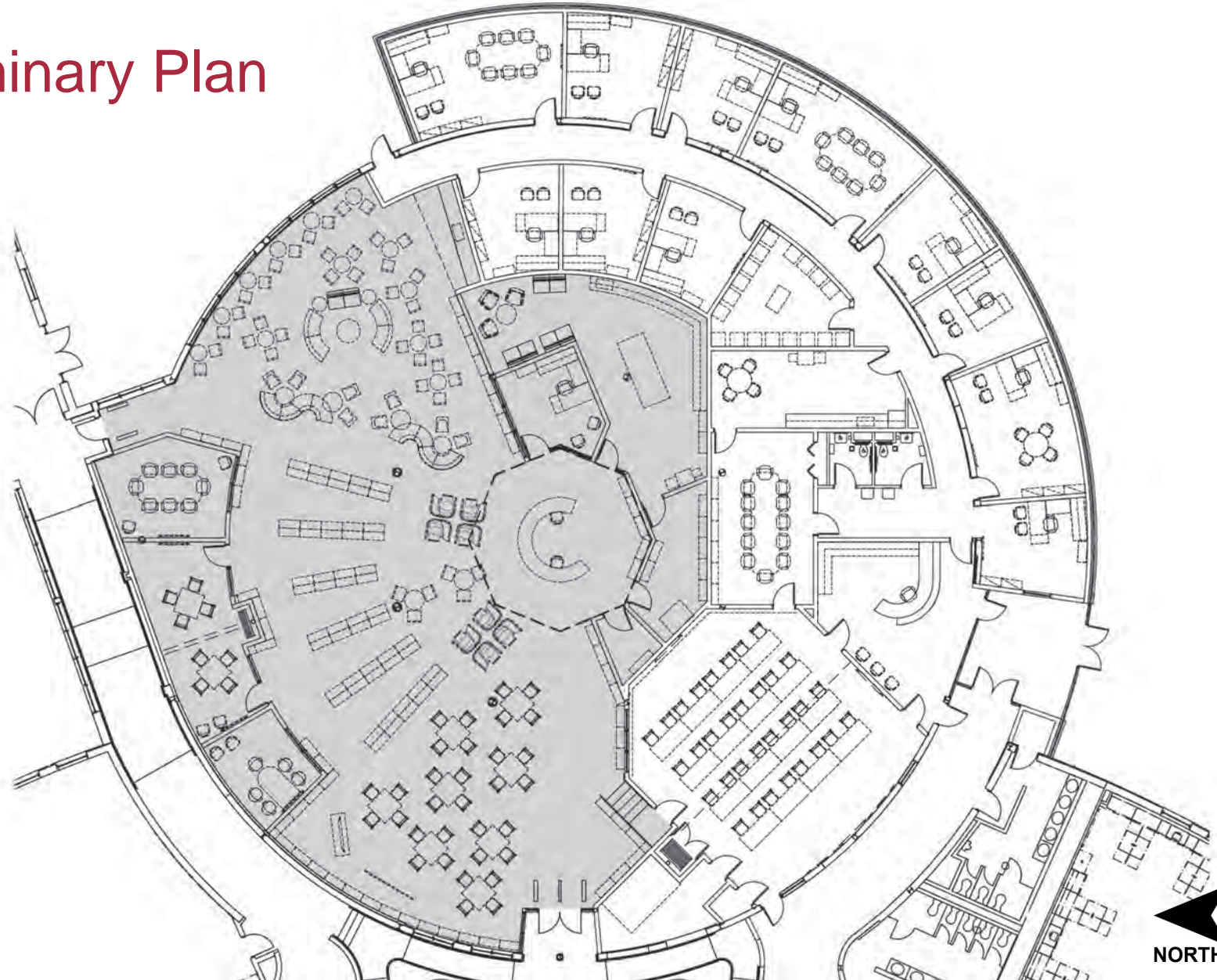
Preliminary Plan

SCHOOL BOARD
UPDATE

May 11, 2023

CREATED FOR

Tri-Creek
School
Corporation



GIBRALTAR
DESIGN



IMAGE OF PRIDE; LOWELL H.S.

Central Office Entry



Considerations

- ❖ Safety/Security and Wayfinding Strategies
- ❖ New Look Lowell HS image for community
- ❖ Adaptable: Plan for future growth and change

SCHOOL BOARD
UPDATE

May 11, 2023

CREATED FOR

Tri-Creek
School
Corporation



GIBRALTAR
DESIGN



IMAGE OF PRIDE; LOWELL H.S.

Preliminary Study

SCHOOL BOARD
UPDATE

May 11, 2023

CREATED FOR

*Tri-Creek
School
Corporation*



GIBRALTAR
DESIGN



SCHOOL BOARD
UPDATE

May 11, 2023

CREATED FOR

*Tri-Creek
School
Corporation*



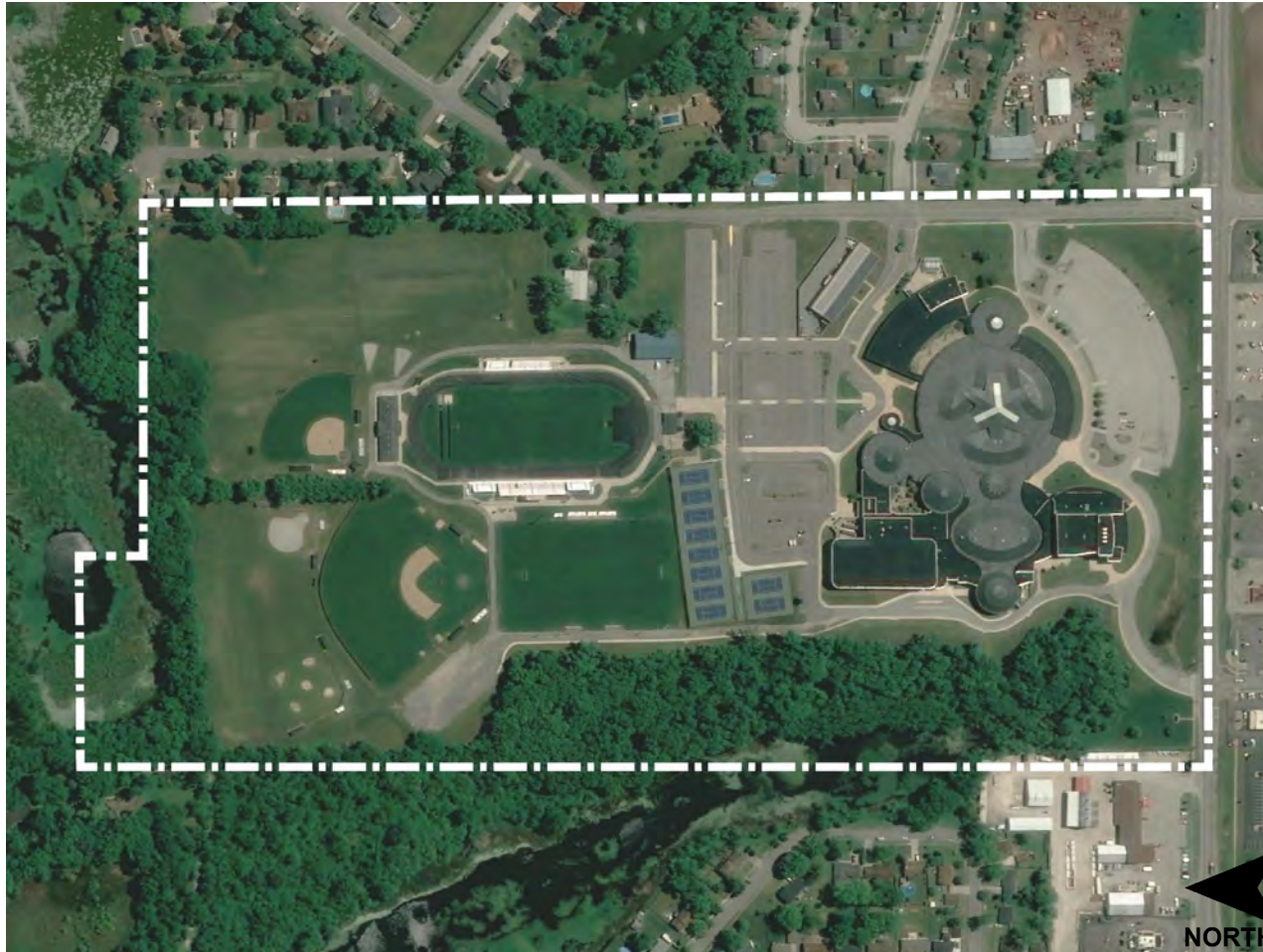
GIBRALTAR
DESIGN

CAMPUS PLAN



LOWELL HS CAMPUS PLAN

Existing Site Plan



Considerations

PARTIAL LISTING

- ❖ Separate Parent and Student Vehicle Traffic Patterns
- ❖ Branding: Signage and Wayfinding Strategies
- ❖ Parking : School and Event
- ❖ Pedestrian Circulation Patterns
- ❖ Athletic Program Needs – Reimagine future
- ❖ Adaptable: Plan for future growth and change

SCHOOL BOARD
UPDATE

May 11, 2023

CREATED FOR

Tri-Creek
School
Corporation



GIBRALTAR
DESIGN



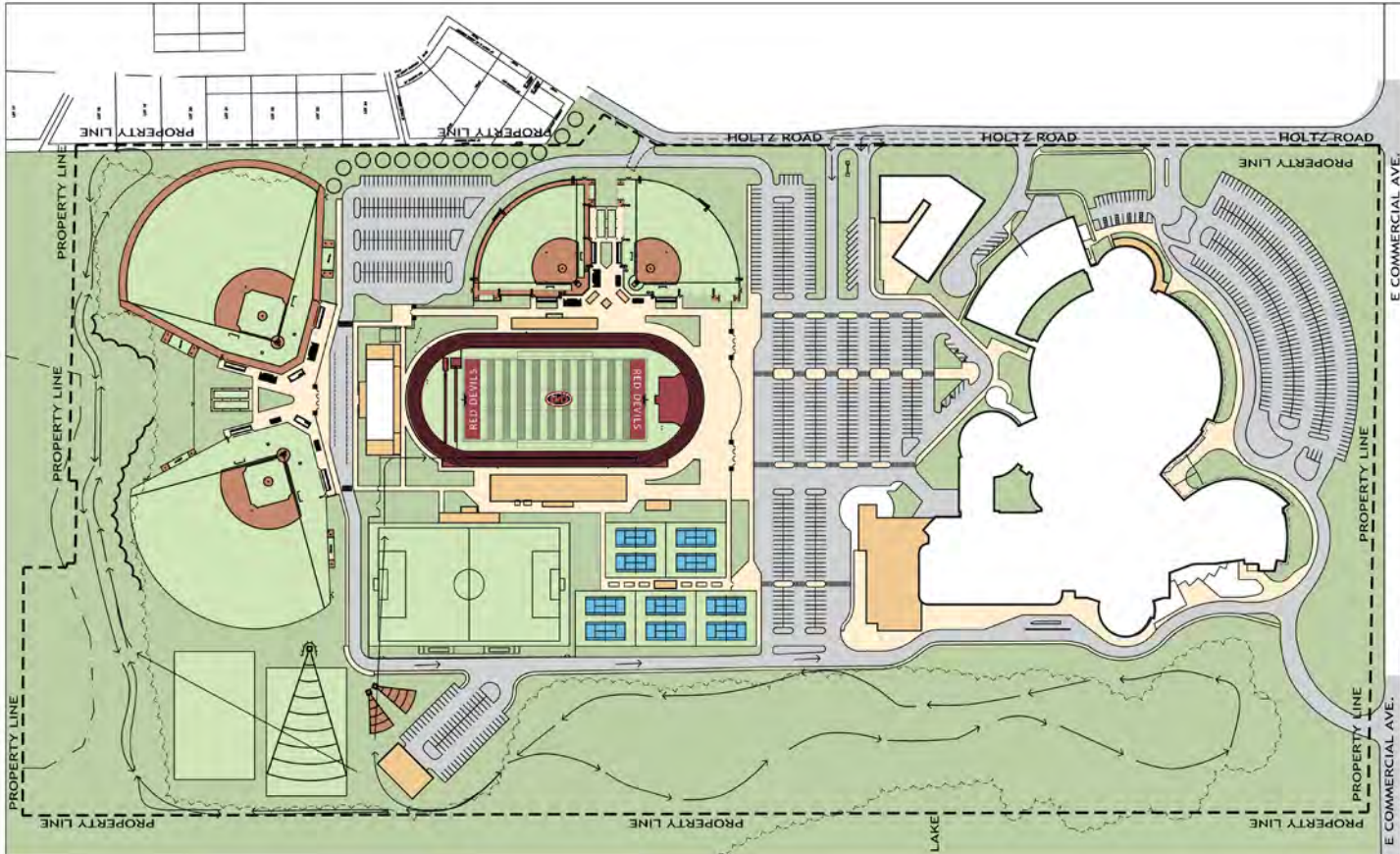
LOWELL HS CAMPUS PLAN

SCHOOL BOARD
UPDATE

May 11, 2023

CREATED FOR

Tri-Creek
School
Corporation



Considerations

- ❖ Safety & Security Traffic Flow Updates
- ❖ Major Components:
 - ◆ Football/Track
 - ◆ Baseball
 - ◆ Softball
 - ◆ Tennis
 - ◆ Soccer
 - ◆ Disc/Shot Put
 - ◆ X-Country Course Adjustments
- ❖ Stadium Seating Expansion & Improvements
- ❖ New Locker Room Building & Related Athletic Buildings
- ❖ 10% more parking



LOWELL HS CAMPUS PLAN

New Concept

SCHOOL BOARD
UPDATE

May 11, 2023

CREATED FOR

Tri-Creek
School
Corporation



GIBRALTAR
DESIGN



SCHOOL BOARD
UPDATE

May 11, 2023

CREATED FOR

*Tri-Creek
School
Corporation*

SCHEDULE



GIBRALTAR
DESIGN



SCHEDULE

Schedule Update

SCHOOL BOARD
UPDATE

May 11, 2023

CREATED FOR

*Tri-Creek
School
Corporation*



GIBRALTAR
DESIGN

- ❖ On Schedule – currently being refined with more specific dates
- ❖ Priority is to Bid the campus infrastructure and “major move” components
- ❖ Construction scheduling is coordinated with athletic seasons of competition
- ❖ Base Bid, Alternate Bids, and related budget protection is still to be determined
- ❖ Main goal is to be ready to approve construction contracts to start construction in late summer/early fall





THANK YOU